

Duration: 3 hours

Total marks: 75

- N.B.:** 1. All questions are compulsory
2. Figures to right indicate full marks

- Q. I** Choose appropriate option for following multiple choice based questions. **20**
- 1** Identification of drugs based on part of plant is
a Taxonomical Classification
b Morphological classification
c Chemical classification
d Serotaxonomical classification
- 2** The content of hydroxy methyl furfural is used to detect the adulteration in **a**
a Honey
b Gelatin
c Acacia
d Wool fat
- 3** Inorganic content of the drug
a Ash value
b Moisture content
c Water soluble extractive
d Alcohol soluble extractive
- 4** Vein islet number is
a Total number of vein islets beneath each epidermal cell
b Total number of vein islets s beneath mesophyll
c Total number of vein islets in 1mm² of epidermal cells.
d Average number of vein islets beneath four continuous epidermal cells
- 5** Which of the following technique is capable of inducing genetic manipulation resulting in production of pest resistant species
a Biological control
b Agricultural control
c Mechanical control
d Chemical control
- 6** Which of the following of Plant growth inhibitor
a Cytokinins
b Abscisic acid
c Auxins
d Gibberellins
- 7** Tapping is the method of collection of -----
a Gums
b Flowers
c Fruits
d Volatile oil
- 8** Following are the methods of Ex-situ conservation except
a Raising nurseries
b Seed banks
c Seedling
d National parks

9 Which of the following is Adenine derivatives

- a Cytokinins
- b Abscisic acid
- c Auxins
- d Gibberellins

10 Following are the micronutrient; except

- a Boron
- b Iron
- c Copper
- d Magnesium

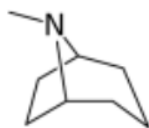
11 _____ is a type of culture in which single cell or small aggregates of cell multiply while suspended in agitated liquid medium.

- a Callus culture
- b Suspension culture
- c Protoplast culture
- d Pollen culture

12 The alcohol solubility of castor oil is due to the _____ constituent. a

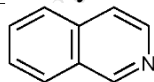
- a Ricinoleic acid
- b Myricyl palmitate
- c Stearic acid
- d Linoleic acid

13 Identify the class of compound from the given basic nucleus



- a Tropane Alkaloids
- b Anthraquinone Glycosides
- c Quinoline Alkaloids
- d Cardiac Glycosides

14 Identify the class of compound from the given basic nucleus



- a Quinoline
- b Isoquinoline
- c Indole
- d Tropane

15 O-Antraquinone glycosides are confirmed by which of the following tests

- a Borntrager's test
- b Modified Borntrager's test
- c Keller Killiani test
- d Shinoda test

- 16 Jute is an example of fibre belonging to the class
a Regenerated fibre
b Mineral fibre
c Carbohydrate fibre
d Protein fibre
- 17 ----- are a diverse group of drugs that alter perception, thoughts, and feelings
a Teratogens
b Allergens
c Hallucinogens
d Enzymes
- 18 ----- is an enzyme secreted in stomach it digests proteins found in ingested food.
a Urokinase
b Streptokinase
c Serratiopeptidase
d Pepsin
- 19 ----- is an example of mucilage from marine sources
a Agar
b Acacia
c Tragacanth
d Honey
- 20 Which the following is obtained from the aqueous extract of the bones of domestic animals
a Papain
b Gelatin
c Acacia
d Tragacanth

- Q. IIA Answer the following. (Any two out of three) 20**
- 1) a) Explain the significance of Ash value and extractive value in the identification of DONO. 10
b) Write the source, preparation, constituents, chemical tests and uses of 'Tragacanth'.
- 2) a. Give salient features and applications of edible vaccine. 10
b. Draw the heterocyclic nucleus/ general structure and write one example with its use and chemical test for the following phytoconstituents
i. Tropane alkaloid
ii. Cardiac glycosides
- 3) a) Classify fibres based on the biological source. Write a note on any one vegetable fibre. 10
b) Write a note on various methods of propagation with suitable example.

Q. IIB Answer the following. (Any seven out of Nine)

- 1) Give biological source, chemical constituent and identification tests for bees wax **5**
- 2) Draw the heterocyclic nucleus/ general structure and write one example with its use and chemical test for the following phytoconstituents **5**
 - i. Anthraquinone glycoside
 - ii. Indole alkaloid
- 3) Define plant tissue culture and its advantages. Explain briefly callus culture and protoplast culture. **5**
- 4) Explain the importance of storage of crude drugs with suitable examples. **5**
- 5)
 - a) Write a note on dried juices and Latex. **5**
 - b) Write a note on conservation of medicinal plants. **5**
- 6) Give advantages & disadvantages of morphological and pharmacological classification of drugs of natural origin. **5**
- 7) Explain any two proteolytic enzymes obtained from plant source. **5**
- 8) Write a note on leaf constants for quantitative microscopy. **5**
- 9) Classify Flavanoids with suitable examples, Give its chemical test. **5**
